

PRO Series Cabinets

By  CrownWall®

Quality, Durability and Great Value



GARAGETM
ROYALTY



The PRO Series Cabinets from CrownWall® are the perfect solution for storing and organizing your garage, basement, or any other part of your home.

Key Features

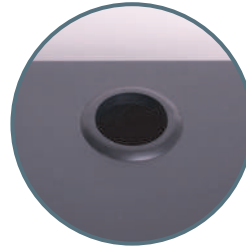


**18 GAUGE
STEEL**

Strong and Durable



Soft Glide Drawers



Cable Access Hole
(Except with 5 Drawer Cabinet)



**Soft-Close Door
Hinges**



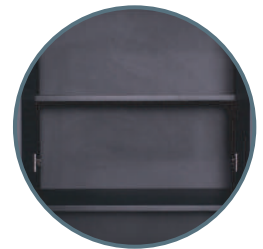
Removable Kick Plates



Adjustable Feet



**Secure Locking
Mechanisms**



Adjustable Shelving



PRO Series Cabinet Handles

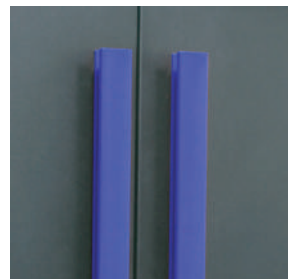
Solid painted handles are full length and ergonomic. Offered in four distinct colors:



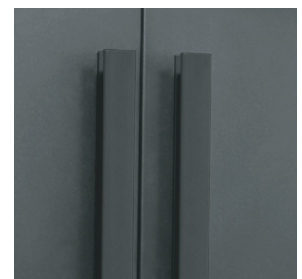
Silver



Red



Blue



Black

2 Door Wall Cabinet (CW-PRO-WALL)

24" W x 14" D x 20" H

- Total Weight Capacity: 100 lbs. (50 lbs. per shelf)
- Welded steel frame and doors
- Double walled doors
- Soft close door hinges
- Includes 1 adjustable shelf
- Full cabinet locking-mechanism
- Designed to be screwed to a wall to ensure safety
- Durable black powder-coat finish
- Assembled for quick and easy installation
- Alignment holes on cabinet side walls facilitate assembly of two or more units



Handle Color Options

Silver (CW-PRO-WALL-SLV) Blue (CW-PRO-WALL-BLU)
 Red (CW-PRO-WALL-RED) Black (CW-PRO-WALL-BLK)

2 Door Base Cabinet (CW-PRO-2DR)

24" W x 21.75" D x 34.75" H

- Total Weight Capacity: 300 lbs. (100 lbs. on the top and 100 lbs. per shelf)
- Welded steel frame and doors
- Double walled doors
- Soft close door hinges
- Includes 1 steel adjustable shelf
- Full cabinet locking-mechanism
- Designed to be screwed to a wall to ensure safety
- Durable black powder-coat finish
- Assembled for quick and easy installation
- Alignment holes on cabinet side walls facilitate assembly of two or more units



Handle Color Options

Silver (CW-PRO-2DR-SLV) Blue (CW-PRO-2DR-BLU)
 Red (CW-PRO-2DR-RED) Black (CW-PRO-2DR-BLK)

2 Door Tall Cabinet (CW-PRO-TALL)

32" W x 24" D x 80" H

- Total Weight Capacity: 600 lbs. (100 lbs. on the top and 100 lbs. per shelf)
- Welded steel frame and doors
- Double walled doors
- Soft close door hinges
- Includes 4 steel adjustable shelves
- Full cabinet locking-mechanism
- Designed to be screwed to a wall to ensure safety
- Durable black powder-coat finish
- Assembled for quick and easy installation
- Alignment holes on cabinet side walls facilitate assembly of two or more units



Handle Color Options

Silver (CW-PRO-TALL-SLV) Blue (CW-PRO-TALL-BLU)
 Red (CW-PRO-TALL-RED) Black (CW-PRO-TALL-BLK)

5 Drawer Base Cabinet (CW-PRO-5DWR)

24" W x 21.75" D x 34.75" H

- Total Weight Capacity: 600 lbs. (100 lbs. on the top and 100 lbs. per drawer)
- Welded steel frame and drawers
- Includes 5 full-extension ball bearing soft-close drawers with mat liners
- Full cabinet locking-mechanism
- Designed to be screwed to a wall to ensure safety
- Durable black powder-coat finish
- Assembled for quick and easy installation
- Alignment holes on cabinet side walls facilitate assembly of two or more units

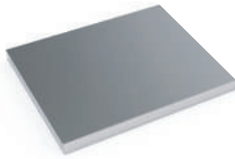


Handle Color Options

Silver (CW-PRO-5DWR-SLV) Blue (CW-PRO-5DWR-BLU)
 Red (CW-PRO-5DWR-RED) Black (CW-PRO-5DWR-BLK)

Countertops

Durable stainless steel countertops are sold in three sizes to work with any PRO Series cabinet configuration.



24" Stainless Steel Countertop (CW-24WSSS)

Dimensions: 24" x 22"



48" Stainless Steel countertop (CW-48WSSS)

Dimensions: 48" x 22"



72" Stainless Steel Countertop (CW-72WSSS)

Dimensions: 72" x 22"

Backsplashes

Versatile aluminum backslashes are sold in two sizes, working with various PRO Series cabinet configurations. All trims and panels included. Weight capacity of 150 lbs/sq. ft. (must be installed on wall studs every 16").



48" Aluminum Backsplash (CW-PRO-B48)

Dimensions: 48" x 23.75"



72" Aluminum Backsplash (CW-PRO-B72)

Dimensions: 72" x 23.75"

Common Configurations

All cabinets in the PRO series selection are sold individually. Here are some common configurations that can be achieved using the 24", 48" or 72" stainless steel work surfaces.

3 Piece Work Station (24")



- 1 x Wall Cabinet
- 1 x 2 Door Base Cabinet
- 1 x 24" Countertop

5 Piece Work Station (48")



- 2 x Wall Cabinet
- 1 x 2 Door Base Cabinet
- 1 x 5 Drawer Base Cabinet
- 1 x 48" Countertop

6 Piece Work Station (72")



- 3 x Wall Cabinet
- 2 x 2 Door Base Cabinet
- 1 x 72" Countertop

4 Piece Work Surface (72")



- 3 x 2 Door Base Cabinet
- 1 x 72" Countertop

4 Piece tool Set (56")



- 1 x Wall Cabinet
- 1 x Tall Cabinet
- 1 x 5 Drawer Base Cabinet
- 1 x 24" Countertop

4 Piece Cabinet Set (56")



- 1 x Wall Cabinet
- 1 x Tall Cabinet
- 1 x 2 Door Base Cabinet
- 1 x 24" Countertop

Common Configurations

7 Piece Full Configuration (112")



- 2 x Upper Cabinet
- 2 x Tall Cabinet
- 1 x 2 Door Base Cabinet
- 1 x 5 Drawer Base Cabinet
- 1 x 48" Countertop

9 Piece Full Configuration (136")



- 3 x Wall Cabinet
- 2 x Tall Cabinet
- 2 x 2 Door Base Cabinet
- 1 x 5 Drawer Base Cabinet
- 1 x 72" Countertop

8 Piece Work Station (136")



- 3 x Wall Cabinet
- 2 x Tall Cabinet
- 1 x 2 Door Base Cabinet
- 1 x 5 Drawer Base Cabinet
- 1 x 72" Countertop

10 Piece Work Station (200")



- 3 x Wall Cabinet
- 4 x Tall Cabinet
- 1 x 2 Door Base Cabinet
- 1 x 5 Drawer Base Cabinet
- 1 x 72" Countertop

Modular System allows for Endless Combinations!



GARAGE[™]
ROYALTY

garageroyalty.com